

LABXPERT™ LABELLER



FREE v2.0 Upgrade: If you purchased a LABXPERT Handheld Labeller before May 1, 2007, go to www.bradyid.com/labxpert to download your FREE v2.0 firmware. Use the standard PC cable supplied with your printer for upgrading and printing from a PC.

With Brady's LABXPERT™ Laboratory Labelling System you have a powerful yet affordable tool at your fingertips! Produce legible, professional looking labels for your lab samples, while drastically reducing the time it actually takes to label.

Increase the efficiency of labelling in your lab with:

- Pre-sized labels customised to fit vials, tubes and slides
- Auto-serialisation - produce 40 labels in under two minutes - that's 80% faster than handwriting!
- One-touch time and date stamping
- Built-in bar-coding
- Over 140 lab-specific Greek, research and safety symbols

Part Number	Reference	Material Description
LABXPERT v2.0 PRINTER & ACCESSORIES		
60900	LABXPERT-KEY	LABXPERT v2.0 LAB LABELING SYSTEM *
60922	LABXPERT-HC-KEY	HARD CASE FOR LABXPERT v2.0 PRINTER
60544	XPERT-AC	(SPARE) AC ADAPTER for LABXPERT v2.0
103788	XPERT-CABLE-USB	(SPARE) USB PC COMMUNICATIONS CABLE
863536	LABXPERT-SER-USB	SERIAL-TO-USB CABLE ADAPTER

* Ships with: printer, AC power supply, USB PC cable, XSL-86-461 supply cartridge, CD containing manuals and driver.

LABEL INSTALLATION STYLES

The right label, properly installed, will give you maximum performance. Here are descriptions of the label styles found on the following pages.



Free Standing Label Style

- Label does not wrap around to overlap itself
- Provides window to view liquid level inside vial



Short Overlap Label Style

- "All-White" label wraps around vial to slightly overlap itself
- Does not provide window to view liquid level inside vial



Short-Tail Overlam Label Style

- Label wraps completely around vial but clear tail only overlaps slightly to maintain lowest profile and easier handling
- Provides window to view liquid level inside vial



Long-Tail Overlam Label Style

- Label wraps completely around vial and clear tail extends over text for additional solvent and handling resistance
- Provides window to view liquid level inside vial

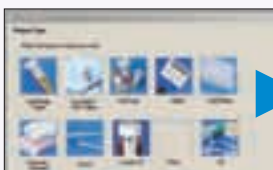
IDENTILAB™ LABORATORY LABELLING SOFTWARE

Created for lab users, IdentiLab™ software features a lab-friendly interface and hundreds of parts and graphics categorised by common lab applications making creating legible, durable, and accurate labels quick and easy.

- Easy-to-use wizards to create new files and templates
- Superscript and subscript characters
- Database import capabilities with refresh feature to ensure data integrity
- 2D barcoding and linear barcoding
- Multi-label data entry view
- Compatibility with a variety of Brady printers including LABXPERT™, TLS models, all Bradyprinter™ benchtop thermal transfer models and all Windows®-based printers



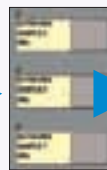
PRINT YOUR LABELS IN JUST THREE SIMPLE STEPS:



STEP 1: Choose a category of label type to fit your Lab Application.



STEP 2: Select your printer and the label part you have installed.



STEP 3: Type your label text onto label preview to see your whole print job on screen!

Click Print

Part Number	Version
51961	IdentiLab™ software, single user CD-ROM

System Requirements

Pentium® Processor
Windows® 9x/ME/2000/NT/XP
Internet Explorer 5.01
64 MB of RAM (minimum 16 MB of RAM)
100 MB of available hard disk space
16-Bit or greater video display card
800 x 600 or greater monitor resolution
CD-ROM drive